

Safety Alert

Number: 16-21

Published: 04/10/2016

Subject: Hit by Mud/Clay During Anchor Handling Operations

What Happened / Narrative

During recovery of anchors from the seabed a marine rep was injured after he got a 50 kg lump of mud/clay rolled onto his back as he was checking the Identification number of a shackle. The anchor was secured on deck and tension was off but the anchor had not been disconnected and moved to the stowage area. Most of the mud/clay had fallen off during the recovery but some mud/clay was still attached to the anchor.

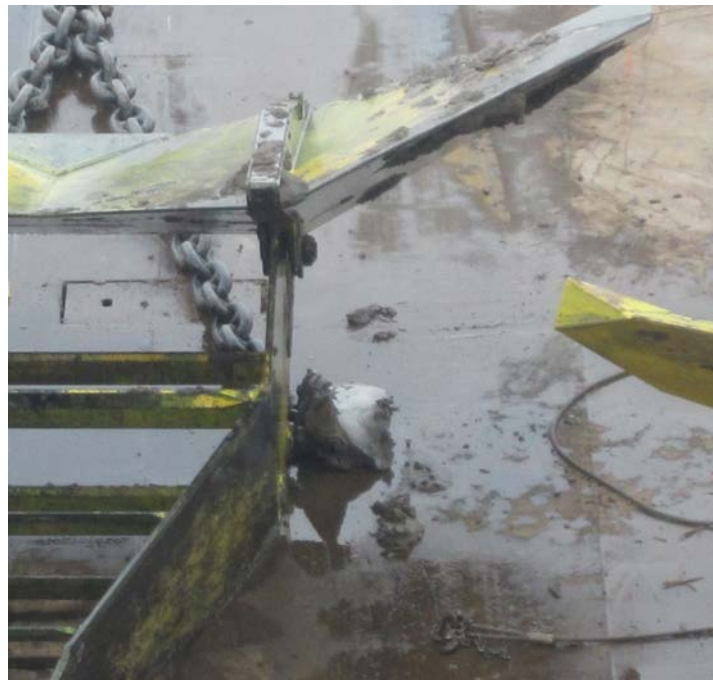
Why Did it Happen / Cause

The Injured Party did not see the hazard and as he was leaning down the mud/clay rolled off and hit him over his back. He fell and sprained his ankle and suffered pain in his back as the result of the incident.

Corrective Actions Taken / Recommendations

It's our responsibility stop unsafe acts and to ensure all crew on deck are operating in a safe manner. As seen in this incident equipment arriving on deck must be clear of mud/clay before persons stand directly under as the mud/clay can be heavy even in small amounts.

Photographs / Supporting Information



The information contained within this Safety Alert and the associated MSF web site is provided in good faith for the benefit of our members and does not constitute and is not intended to constitute professional advice or any form of formal representation on behalf of any MSF member or officer. The text as provided by submitting organisations may be amended to ensure that it is brief, informative and readable but will as far as reasonably practicable remain as per the intent of the original submission. For the avoidance of doubt, no liability whatsoever shall be attached to any guidance, recommendation or statement contained therein. Contents should be reviewed individually by recipients who will determine relevance to their own operations.